



48 Balliol Court, Rutherway, Oxford, OX2 6QZ

£2,300 PCM - 8th October 2025

- Three bedrooms
- Gas CH
- Unfurnished
- Mains gas electricity and water
- Two bathrooms
- Kitchen appliances
- EPC rating C
- Cloakroom
- Parking for one car
- Council Tax band E

Rutherway, Oxford OX2 6QZ

NO HMO LICENCE. In this sought after location, a three bedroom, two bathroom mid terrace house in very good order throughout . Close to Port Meadow and within walking distance of Jericho shops, restaurants and pubs. Available unfurnished. Master bedroom with fitted wardrobes and ensuite shower room, Further double with fitted wardrobes and single bedroom, Bathroom, Living/Dining room, Fully fitted Kitchen with appliances, Cloakroom, Gas CH, Parking for one car. Rear garden.

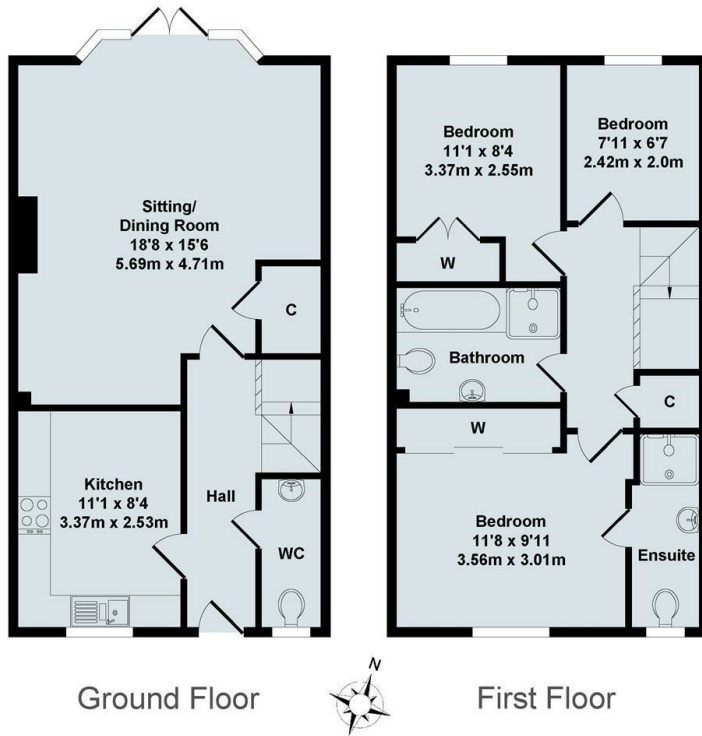
PLEASE NOTE - PHOTOS TAKEN PRIOR TO LAST TENANCY



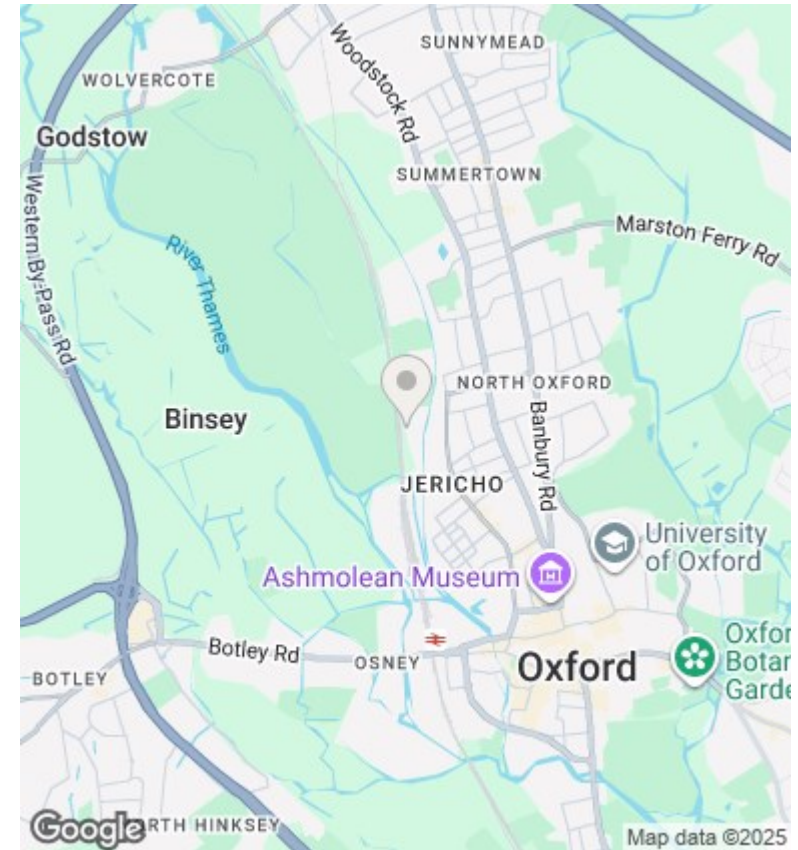
Council Tax Band: E



A three bedroom, two bathroom mid terrace house in excellent condition having been redecorated with new flooring throughout. Close to Port Meadow and within walking distance of Jericho shops, restaurants and pubs. Unfurnished. Master bedroom with fitted wardrobes and ensuite shower room, Further double bedroom with fitted wardrobes and Single bedroom, Bathroom with bath and separate shower cubicle, Spacious Living/Dining room with bay window and French doors to rear garden, Fully fitted Kitchen with electric oven, gas hob, fridge/freezer and washing machine, Cloakroom. Gas CH. Parking for one car. NO HMO LICENCE.



Total Approx. Floor Area 899 Sq.Ft. (83.50 Sq.M.)
 All items illustrated on this plan are included in the "Total Approx Floor Area"



Directions

Viewings

Viewings by arrangement only. Call 01865 515900 to make an appointment.

Council Tax Band

E

Energy Efficiency Rating		Current	Potential
<i>Very energy efficient - lower running costs</i>			
(92 plus)	A		
(81-91)	B		86
(69-80)	C	71	
(55-68)	D		
(39-54)	E		
(21-38)	F		
(1-20)	G		
<i>Not energy efficient - higher running costs</i>			
England & Wales		EU Directive 2002/91/EC	